



**STOCKPORT**  
METROPOLITAN BOROUGH COUNCIL

---

---

# **Stockport Council**

## **Connected Smart Cities Example**

---

---

**Andy Bleaden**

---

---



# Stockport Council - Who are we?

Based in England's North West

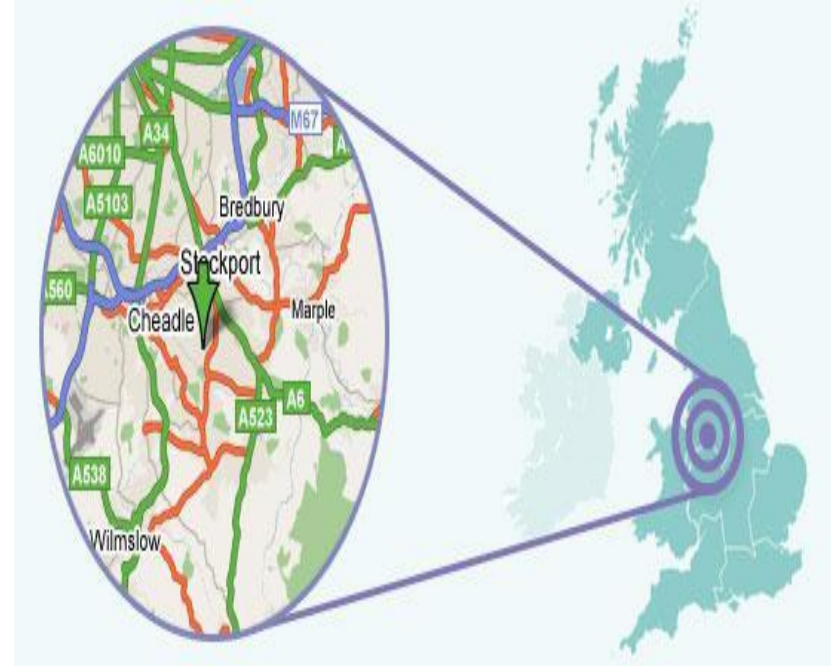
Greater Manchester

Pop: 280,000

Active in EU cooperation/EIP-AHA

One of Founding members of Covenant  
on Demographic Change

ECH Alliance/Coral members



**STOCKPORT**  
METROPOLITAN BOROUGH COUNCIL

# 2014 Older people's health

Stockport has 55,600 residents aged 65+



Stockport JSNA

joint strategic needs assessment

## % of population

### Age 65+



19.4% of Stockport population (55,600)  
22.1% 2025 population projection (66,500)

### Compared to England



17.6% (2014)  
20.2% (2025 projection)

### Age 85+



2.6% of Stockport population (7,400)  
3.7% 2025 population projection (11,000)

### Compared to England



2.6% (2014)  
3.2% (2025 projection)

## Life expectancy at 65



19.4 years in 2012-14  
73.2 in most deprived areas  
82.5 in least deprived areas



21.1 years in 2012-14  
17.7 in most deprived areas  
22.5 in least deprived areas

## Healthy life expectancy at 65



10.3 years in 2011-13  
5.6 in most deprived areas  
12.7 in least deprived areas



10.7 years in 2011-13  
6.5 in most deprived areas  
12.8 in least deprived areas

## Hospital admissions age 65+ (2012-13, directly age standardised per 100,000)



28,754 emergency hospital admissions  
41,237 in most deprived areas  
23,706 in least deprived areas



27,070 in 2012-13



2,748 injuries due to falls  
3,896 in most deprived areas  
2,351 in least deprived areas



2,367 in 2012-13



6,652 cancer admissions  
6,133 in most deprived areas  
6,645 in least deprived areas



6,073 in 2012-13

## Excess winter deaths



65.5 (9.5%) age 65+  
100.5 (12.7%) all ages  
7.2% in 40% most deprived areas (65+)  
14.5% in 40% most deprived areas (aa)

11.6% England and Wales (all age)

## Health and wellbeing



2,700 with dementia



20% with 2 or more long term conditions



33% living alone



42% Cannot do at least 1 domestic task



14% Provide unpaid care



50% with a long term health problem or disability

## Social Care



775.7 Permanent admissions to care homes (65+ per 100,000)  
731.4 National average



86.6% Older people at home 91 days after leaving hospital  
83.7% England average



89.2% people using adult social care who received self-directed support  
59.9% England average



### Long term conditions

20% with 2 or more conditions



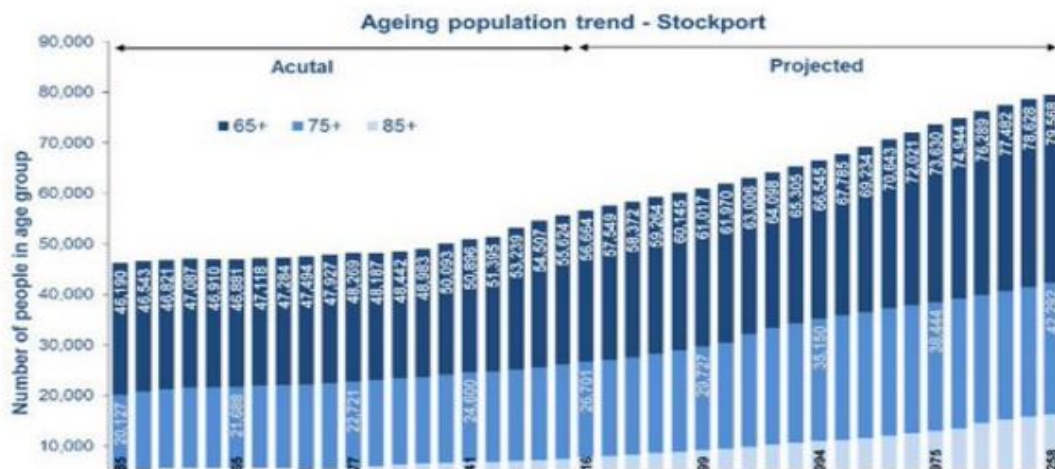
### Isolation

33% live alone



### Health and wellbeing

50% have a long term health problem or disability





# What we do in Europe.

Inform user specifications via coproduction in funded projects

Act as end users in trials in funded projects

Help with dissemination

Get involved with non funded activity - 3\* ref site

EIP-AHA, Coral, Covenant on Demographic Change, Agile Ageing Alliance

Share some of our best practice and influence



**STOCKPORT**  
METROPOLITAN BOROUGH COUNCIL

# Why we get involved in Europe.

Access to new technology

Access to cash

Because cooperation works

Political buy in

Access best practice/influence across Europe

Why on earth not!



**STOCKPORT**  
METROPOLITAN BOROUGH COUNCIL

# Relationships/synergies between Smart Cities and Active Ageing 3 examples

Project Silver PCP

Project Mario

My Care My Choice



**STOCKPORT**  
METROPOLITAN BOROUGH COUNCIL

# Project Silver - What it was <http://www.silverpcp.eu/>

Dual Project - Pre Commercial Procurement (PCP) and Robot project

PCP project developed best practice for pre commercial procurement and innovative funding

Competition to develop new robotic solutions for cities for Seniors

Recognised as huge success for Europe

Saw successful SME develop a Robotic stroller



**STOCKPORT**  
METROPOLITAN BOROUGH COUNCIL



# Project Silver - What we did

Got involved in the PCP process and development

Led on the ethics area

Developed successful testing programme

Got involved in the competition to find successful solutions

Tested successful prototypes locally

Large level of dissemination about PCP process and new robotic solution



**STOCKPORT**  
METROPOLITAN BOROUGH COUNCIL

# Project Silver - What we got out of it

**Access to new tech - Robots!**

**PCP experience**

**Involvement in design and coproduction**

**Future partners**

**Good links with Innovate UK**



**STOCKPORT**  
METROPOLITAN BOROUGH COUNCIL

# Project Mario - What it is - [www.mario-project.eu](http://www.mario-project.eu)

EU funded project targeting isolation and loneliness using companion robots

Specifically targeting people living with dementia

Develop speech synthesis and platform for robot

Testing in Italy, Ireland and Stockport

Testing whether people living with dementia can accept and engage with robots - or not!



STOCKPORT  
METROPOLITAN BOROUGH COUNCIL

# Project Mario - What are we doing

Involved in initial user specification directly with industry and SMEs

Acceptability testing

Developing testing plans

Carrying out tests in community and home setting

Assisting with dissemination



**STOCKPORT**  
METROPOLITAN BOROUGH COUNCIL

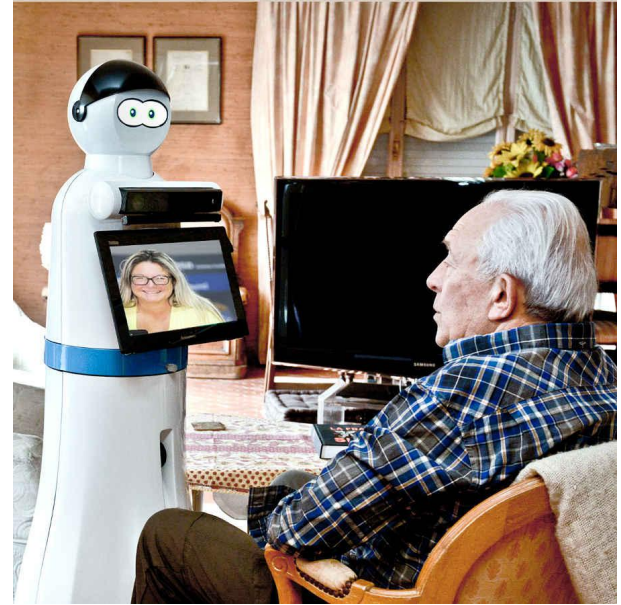
# Project Mario - What are we getting out of it

Access to new tech

Access directly to SMEs and Industry leads

Robots for people living in Stockport

Reputation as partner prepared to get involved  
more formal research (ie University/Hospital)



**STOCKPORT**  
METROPOLITAN BOROUGH COUNCIL



# Connected Smart Cities - My Care My Choice

Coproduced by seniors

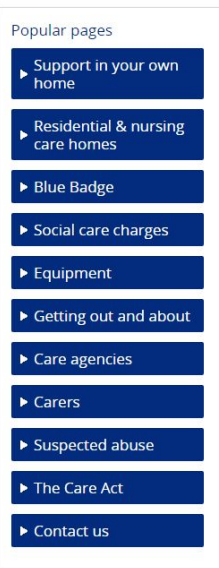
Award winning

Personalised budgeting

Market Place/Rating system

Silver Economy

[www.mycaremychoice.org.uk](http://www.mycaremychoice.org.uk)



Welcome to My Care My Choice, the website for Stockport Council Adult Social Care

My Care My Choice has information about local services, groups and activities, as well as advice about looking after your wellbeing and independence.

If you or someone you know needs some help with managing day to day life, My Care My Choice can help you find out about what kinds of support are available.



**STOCKPORT**  
METROPOLITAN BOROUGH COUNCIL

# Contact

Andy Bleaden

Funding and Programmes Manager

Twitter @andybleaden

+44 (0)7946481674

andy.bleaden@stockport.gov.uk



**STOCKPORT**  
METROPOLITAN BOROUGH COUNCIL