



*OASC – Brussels*

*11th January 2018*

*Dr Nikolas Thomopoulos*

Connected Smart Cities Conference 2018

# WHAT IS THE QUESTION?





## Outline

- Contemporary challenges
- What is the question?
- WISE-ACT



# Contemporary challenge

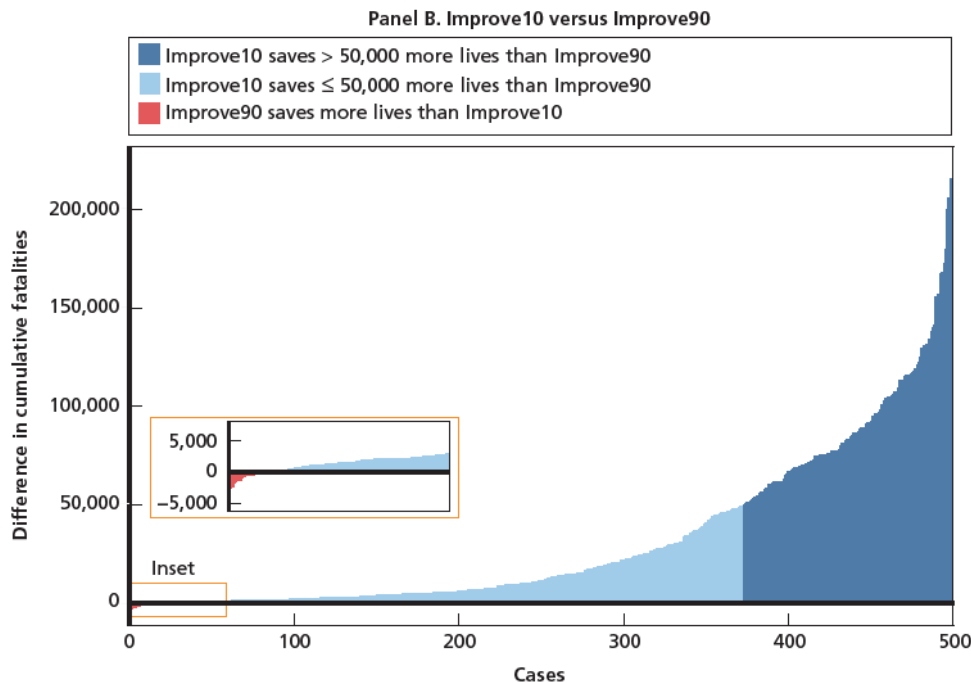
BUSINESS SCHOOL



UNIVERSITY  
of  
GREENWICH

## The enemy of good

- Can we afford waiting for HAVs?
- At what cost and for how long?



*Kalra and Groves (2017)*



# Where are we now?

BUSINESS SCHOOL



## ...and where should we focus?

*Daimler Trucks North America's (DTNA) landmark project, which had swallowed some **\$4.3 billion** in R&D investment over the ten-year period leading up to the launch in 2015 according to [DTNA](#), has gone quiet.*

*On the surface, the reason for the rapid reversal could be clerical in nature: Despite Freightliner being able to demonstrate the technical viability of the Inspiration Truck concept, going public with it instantly **kicked off a debate on the political and socio-economic impact of autonomous driving** that voided much of the project's initial magic and has still not been resolved.*



# So what is the question now?

More importantly: is there an answer?

## Harmonisation – Interoperability - Scalability

### CA16222 WISE-ACT

Wider Impacts and Scenario Evaluation of Autonomous and Connected Transport

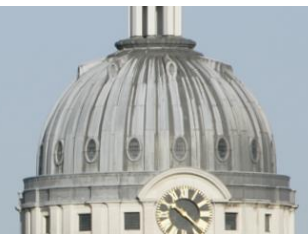
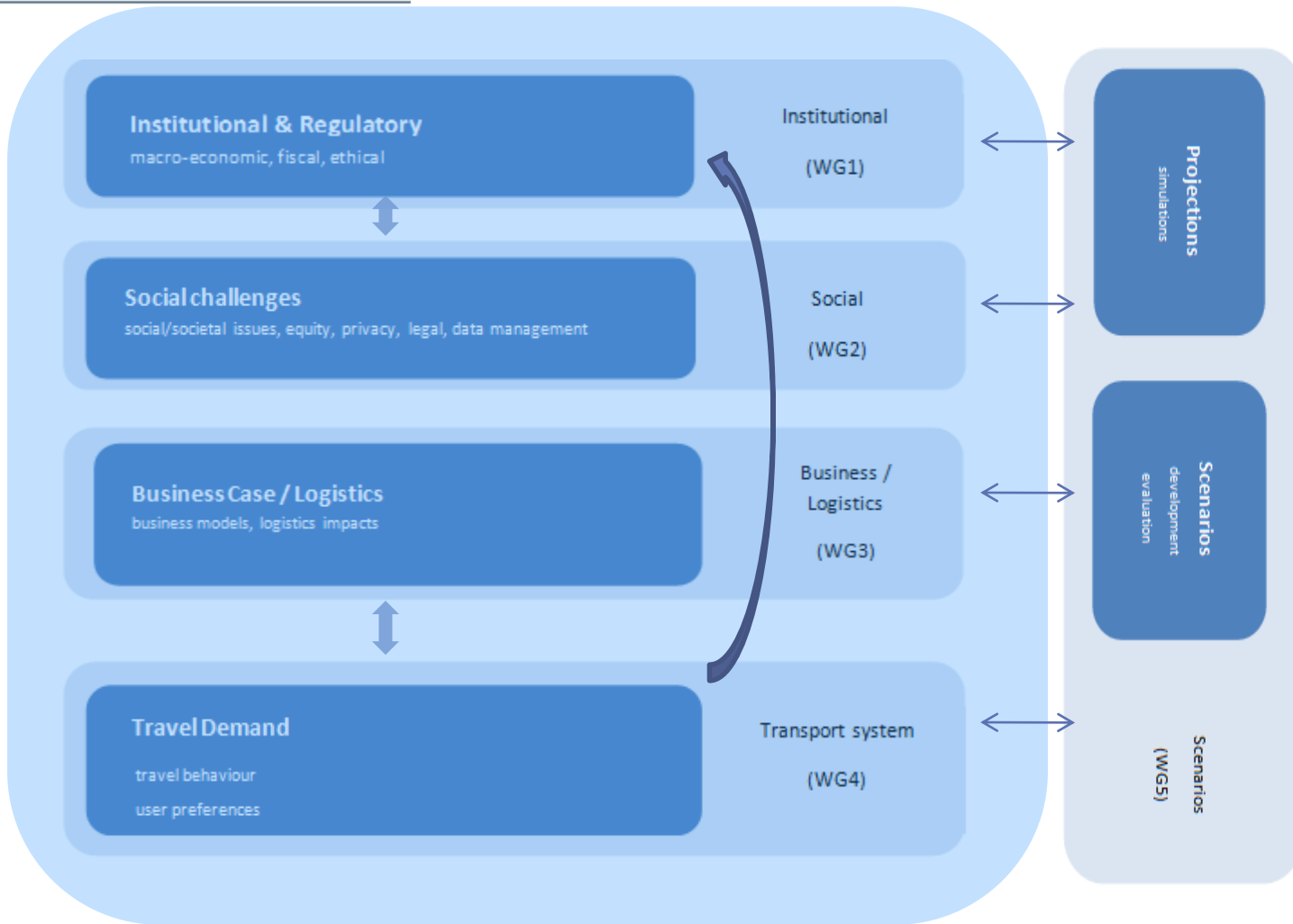


# Working Groups

BUSINESS SCHOOL



UNIVERSITY  
of  
GREENWICH





- **WG1: Regulatory, Government, Macro-economic challenges**
  - T<sub>1</sub>: identify the macro-economic and fiscal implications of ACT and propose appropriate policy measures
  - T<sub>2</sub>: review the required legal framework including its underlying ethics and accommodating liability concerns
  - T<sub>3</sub>: explore safety scenarios of widespread ACT deployment and inform the development of relevant standards
- **WG2: Social challenges**
  - T<sub>4</sub>: understand the value of travel time under an ACT scenario
  - T<sub>5</sub>: evaluate the privacy and security concerns emerging from the deployment of ACT
  - T<sub>6</sub>: categorise the anticipated equity impacts and propose suitable principles and criteria for an inclusive and fair transport system of the future
- **WG3: Business challenges**
  - T<sub>7</sub>: examine business implications for the logistics sector
  - T<sub>8</sub>: classify viable business models





- **WG4: Transport system**

T<sub>9</sub>: identify the key economic, social, demographic, behavioural and cultural factors and barriers that determine a positive attitude of users towards AVs introduction

T<sub>10</sub>: analyse the behaviour of AV end users by comparing their preferences and choices based on hypothetical mobility options through existing Stated-Preference experiments

T<sub>11</sub>: propose a taxonomy of potential sites for deployment of AVs while taking into account the geographical, social, economic, environmental and transport characteristics of the areas under study

- **WG5: Scenario evaluation**

T<sub>12</sub>: develop and evaluate a number of scenarios of AVs deployment throughout Europe

T<sub>13</sub>: compare the results of simulation analyses across different localities

T<sub>14</sub>: to develop a set of criteria and indicators which can inform policy makers about deployment of ACT in a certain locality





# Next steps

BUSINESS SCHOOL



UNIVERSITY  
of  
GREENWICH

## For more info and to get involved:

- Visit COST website: [http://www.cost.eu/COST\\_Actions/ca/CA16222](http://www.cost.eu/COST_Actions/ca/CA16222)
- Go through the MoU
- Choose relevant Working Group
- Contact us
- Make contribution!
- Next workshop: **15<sup>th</sup> – 16<sup>th</sup> March 2018**



# Let's assist cities to act wisely...

BUSINESS SCHOOL



UNIVERSITY  
of  
GREENWICH



## Have a safe journey!





# ANY QUESTIONS

Nikolas Thomopoulos: [N.Thomopoulos@greenwich.ac.uk](mailto:N.Thomopoulos@greenwich.ac.uk)  
Seppo Haataja: [seppo.haataja@businessstampere.com](mailto:seppo.haataja@businessstampere.com)





UNIVERSITY  
*of*  
GREENWICH

**The Business School**

University of Greenwich  
Greenwich Campus  
Old Royal Naval College  
Park Row  
London SE10 9LS

**Enquiry Unit**

Telephone: 020 8331 9000  
E-mail: [courseinfo@gre.ac.uk](mailto:courseinfo@gre.ac.uk)