



Issy-les-Moulineaux, a City open to innovation

Issy-les-Moulineaux, a City open to innovation

- ✓ 70.000 inhabitants and jobs
- ✓ 50% employed in ICT
- ✓ Strong focus on Smart Mobility and Data
- ✓ Involving Citizens and Companies in co-creation of Services
- ✓ Testing Services in Real Life Experiences



So Mobility, making urban travels easier

- Public-private bodies acting together
- To anticipate yards impact on traffic
- To test innovative solutions

Consortium



Public

Companies

Start-ups

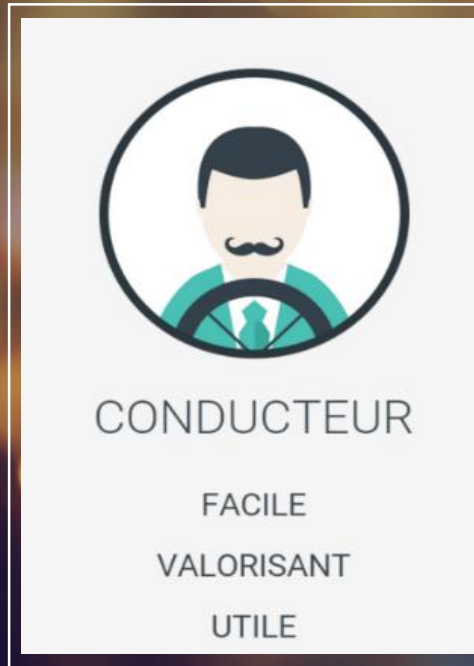
R&D

Mobility Pilots

1st French City where
you can pay your
parking with mobile
phone



Bus in real time on
the map of your
smartphone



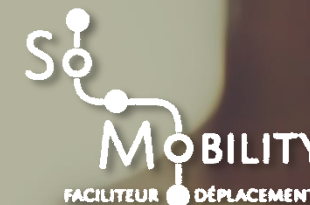
Pilot to find a parking
spot in a predictive way



Pilot for park sharing in a
school parking



Mobility Pilots



Test of a driverless shuttle in a public park



Sensors for real time availability of on street parking spots



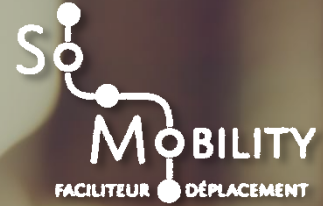
On-street and off-street parking spots available published on data.issy.com



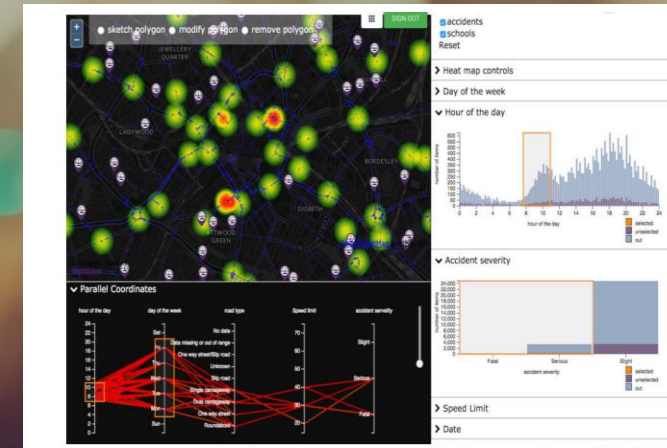
Promotion of carpooling 2.0



Polivisu, big data for policymaking



The target of the project is the creation of tools and visualisations in real time and with predictive analysis to help policymaking



- A board to mash up data
- Prediction of traffic with calculation of the impact of roadworks
- Analysis of social network data to extract traffic data

Thank you for your attention

Web
www.issy.com

Facebook
IssylesMoulineaux

Twitter
@issylesmoul

fr.linkedin.com/in/sattamatteo/