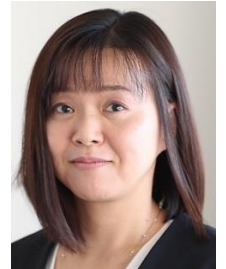


NEC's strategy and global context

Mitsuyo Nishioka



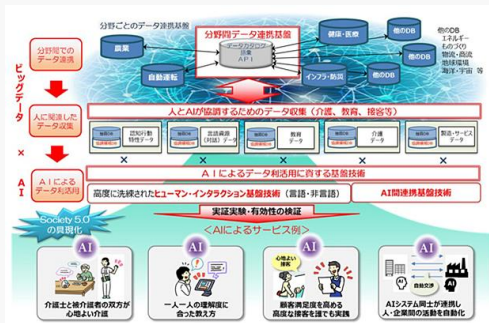
Super City Business Promotion Division
NEC Corporation



Reference Architecture for Smart city

NEC contribution to Open guideline establishment in Japan

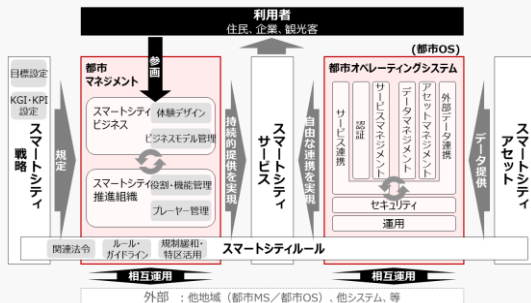
Cross-domain Data Exchange platform



Source: NEDO web site

In FY2018
By SIP, cross-ministerial Strategic Innovation Promotion Program, Cabinet Office

Smart City Reference Architecture



Source: CISTI, Cabinet office web site

In FY2019
By SIP, Cabinet Office

Research on Data Exchange platform for Super City



Source: Regional revitalization, Cabinet office web site

In FY2020
By Regional Revitalization, Cabinet Office

Case in Takamatsu-city

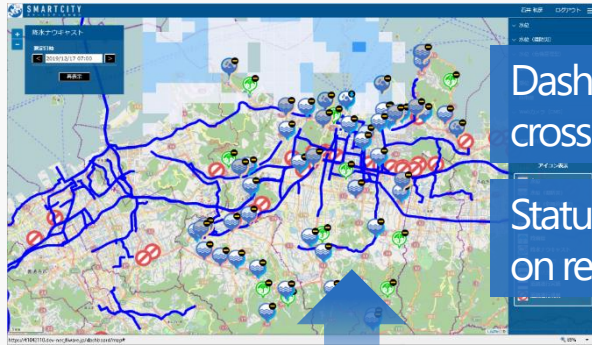
Smart city

Super City



- Data exchange platform for wide-area Disaster Management
- Coordination lead by core city in the region

- ✓ Sharing the same goals across regional boundaries
- ✓ Sharing evidence data and supporting resources



Dashboard for cross-domain data

Status recognition on real time



Road



Weather



Water level of rivers



Tide level

Neighboring three municipalities Sharing Data exchange Platform

