

January 2022



Spanish TEF SCC

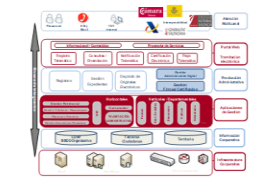
**Trustworthy AI in cities and
communities**

Ramón Ferri
Smart City Officer

vlci@valencia.es

València state of play in SCC

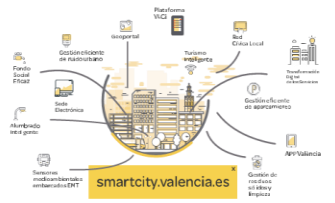
ELECTRONIC RIGHTS OF CITIZENS



E-Administration Master Plan

2008-14

SUSTAINABLE & SMART CITY



Smart City Strategic Plan

2013-18

CONVERGENT DIGITAL AGENDA



ICT Strategic Plan

2018-21

URBAN AGENDA



Missions València 2030

2030

Commitment with Standards

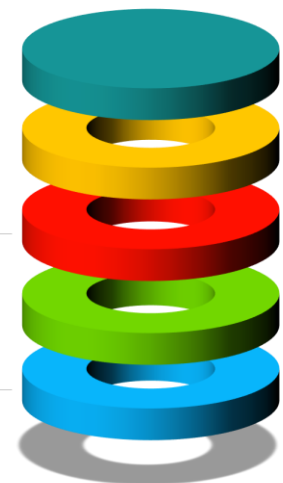


Digital Transformation of Services

- 30% of services integrated in platform
- 50 public tenders, smart clauses.

Connectivity

- Connectivity strategy
- Coordination of deployment of IoT and 5G



Innovation Ecosystem

Smart Solutions

- Citizens dashboard
- City dashboards
- Specific dashboards

Enabler Smart Elements

- Urban Platform
- Geographical Information System
- Open Government Portal
- CityApp

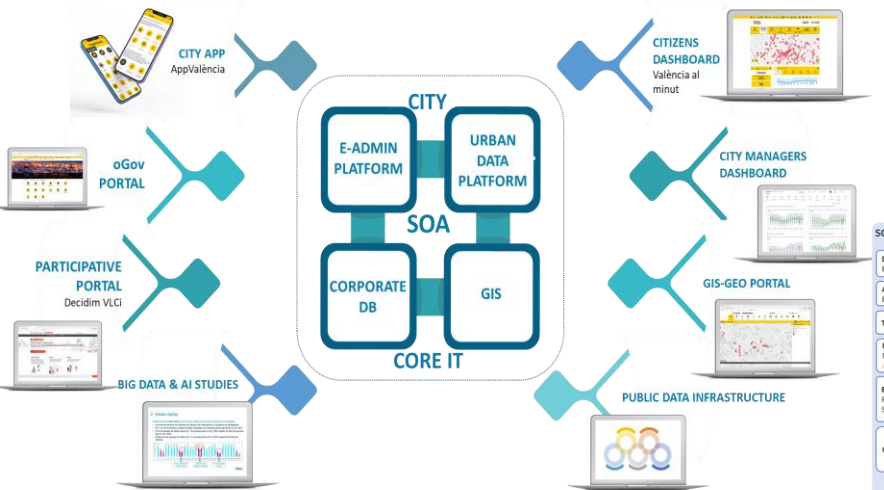
DIGITAL TRANSITION JOURNEY

TEF SCC

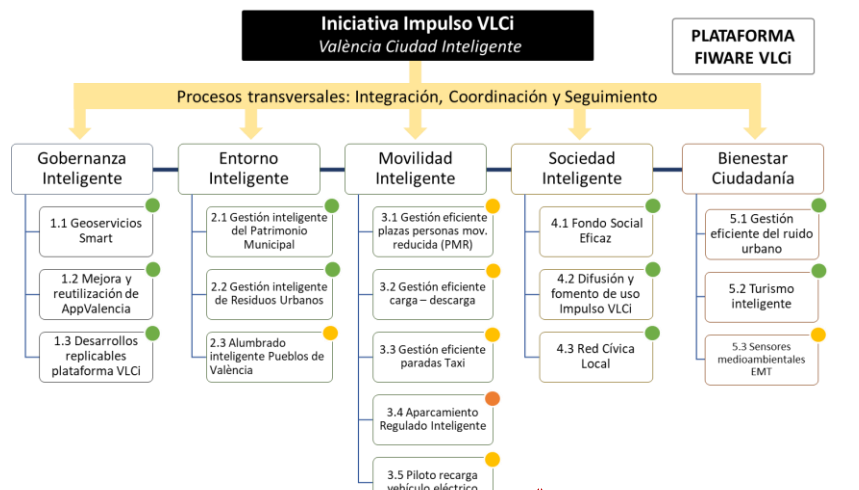
SMART OFFICE – SMART GOVERNANCE

DATA INFRASTRUCTURE FOR SMART SERVICES

MASSIVE IoT DEPLOYMENT

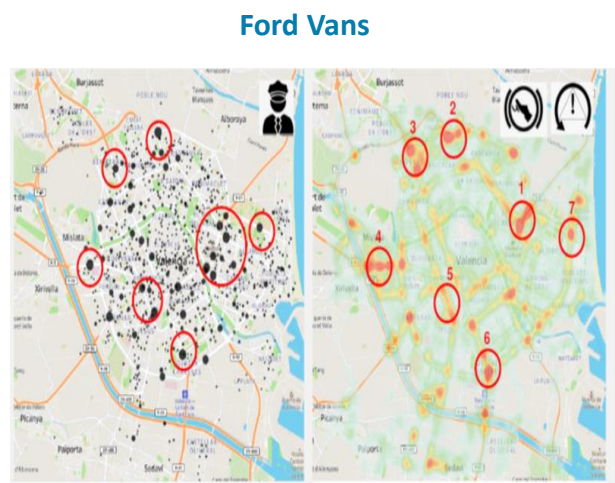


ARCHITECTURE FOR DIGITAL TWIN



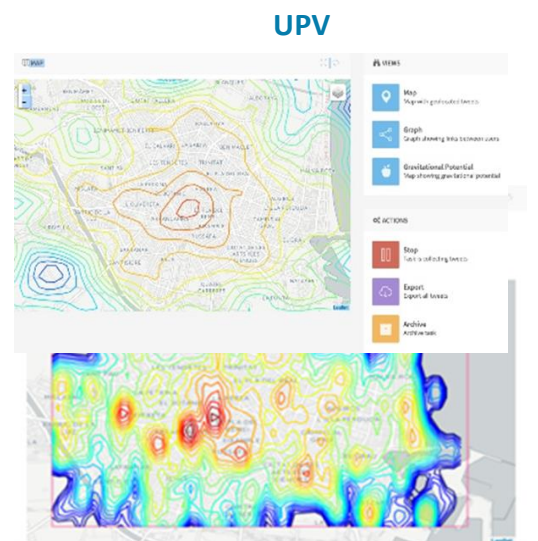
Accidents prevention

- SINIESTRALITY AND DRIVING
- Accidents in the city overlap critical driving data
- linked the Valencia App with Smart Device Link libraries on the vehicles console to send alerts.



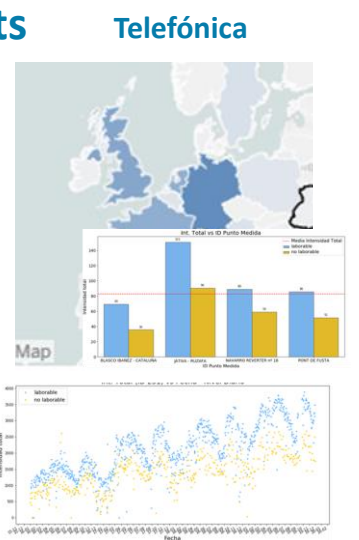
Citizen behavioural Analysis

- Obtain map interfaces allowing simplified analysis and understanding of social activity in the city as well as projections based on activity data from social networks.
- Analyze social network data based on three essential axes: spatial location, social interaction amongst users, and emotional load of the text.



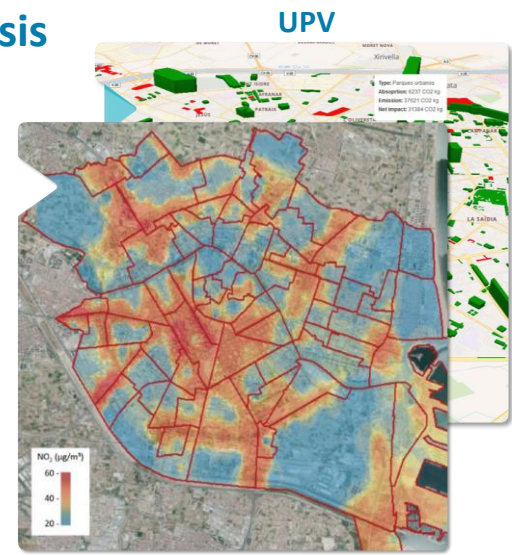
Mobility model: tourism and rain impacts

- Analysis of various data sources, including anonymous data from the mobile network, aggregated and extrapolated, showing the actual movement of groups of people in the city.
- Study of the use of bike lanes using information collected by the city in sensors deployed on the street.



Low Emissions Zones impact analysis

- POLLUTION LEVELS + ROAD TRAFFIC MONITORING
- Real time data combined with external AI services.
- Simulation and prediction of complex system's behavior.
- Rapid-response, event-base systems in complex data environment.



> Enabling Factors for the Spanish TEF SCC

- **AI excellence leadership:**

- UPV Best Technical University in Spain in Shangai ranking.
- Flagship AI center in Spain. València Research Institute for AI (VRAIN). 120 staff members. AI Computer clusters & Research labs. TAILOR – European Network of Excellence Research Centers

- **Regional Ecosystem:**

- 6 instances of Urban Data Platform for open innovation EU stakeholders and academia.
- Regional Digital District creates facility for open innovation in SCC in València.
- Valencia candidate for 100 EU Climate neutral cities.
- UPV living lab for carbon neutral city commitment and SC.
- La Marina EU living lab. Strong commitment with Telefónica and its cybersecurity centre in IoT and SC.

- **National Support:**

- Coordinating Digitalisation and AI group of Spanish Network of Smart Cities (SNSC).
- Next Generation project on National Interoperable Urban Intelligence System.
- Spain Resilience and Recovery Funds node on Smart Cities in Valencia.
- Coordinating the Indicators and Semantic group of the SC standardization committee in (UNE).
- Sharing information with different smart city platforms: Rota, Logroño, Provincial government of València.

- **International Cooperation on SCC:**

- Coordinating the Thematic Group on City Platforms on the U4SSC. WG3: New Architecture for sustainable digital development. WG5: City Platform implementation guide.
- Coordinating MAtchUP project, one of the Smart City Lighthouse projects (SCC-01-Horizon 2020).



**AJUNTAMENT
DE VALÈNCIA**

Ramón Ferri
vlci@valencia.es