

SMARTCITY  
EXPO WORLD CONGRESS

10 YEARS  
CREATING CITIES  
TO LIVE IN

BARCELONA · November 15-17, 2022

WELCOME TO  
CONGRESS



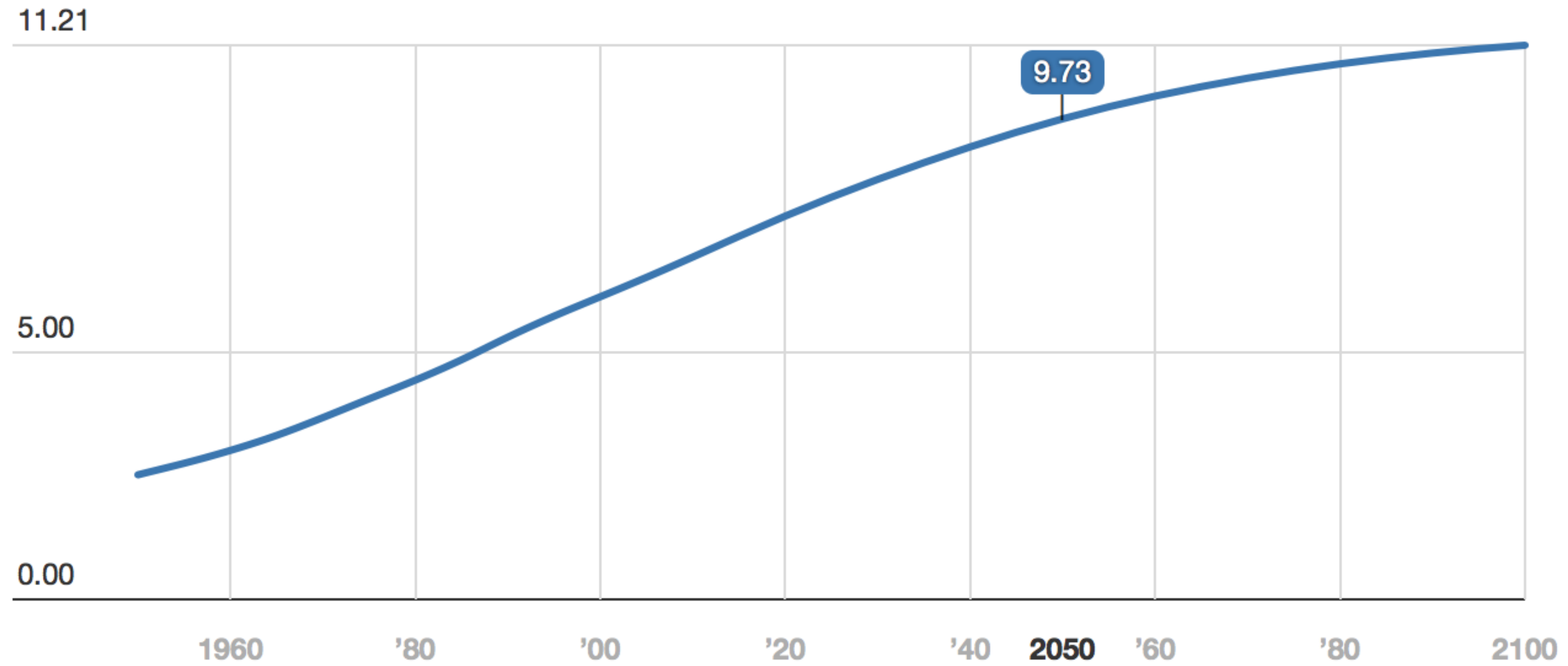


**REALITY NUMBER 1.**

**THE CENTURY OF CITIES**



## World Population and Projection to 2100 (Billions)





**2021: 57%**  
**2050: 70%**

**URBAN POPULATION**



## AN URBAN WORLD

This graphic depicts countries and territories with 2050 urban populations exceeding 100,000. Circles are scaled in proportion to urban population size. Hover over a country to see how urban it is (percentage of people living in cities and towns) and the size of its urban population (in millions).

### Urban Population

- Greater than 75%
- 50% - 75%
- 25% - 50%
- Less than 25%





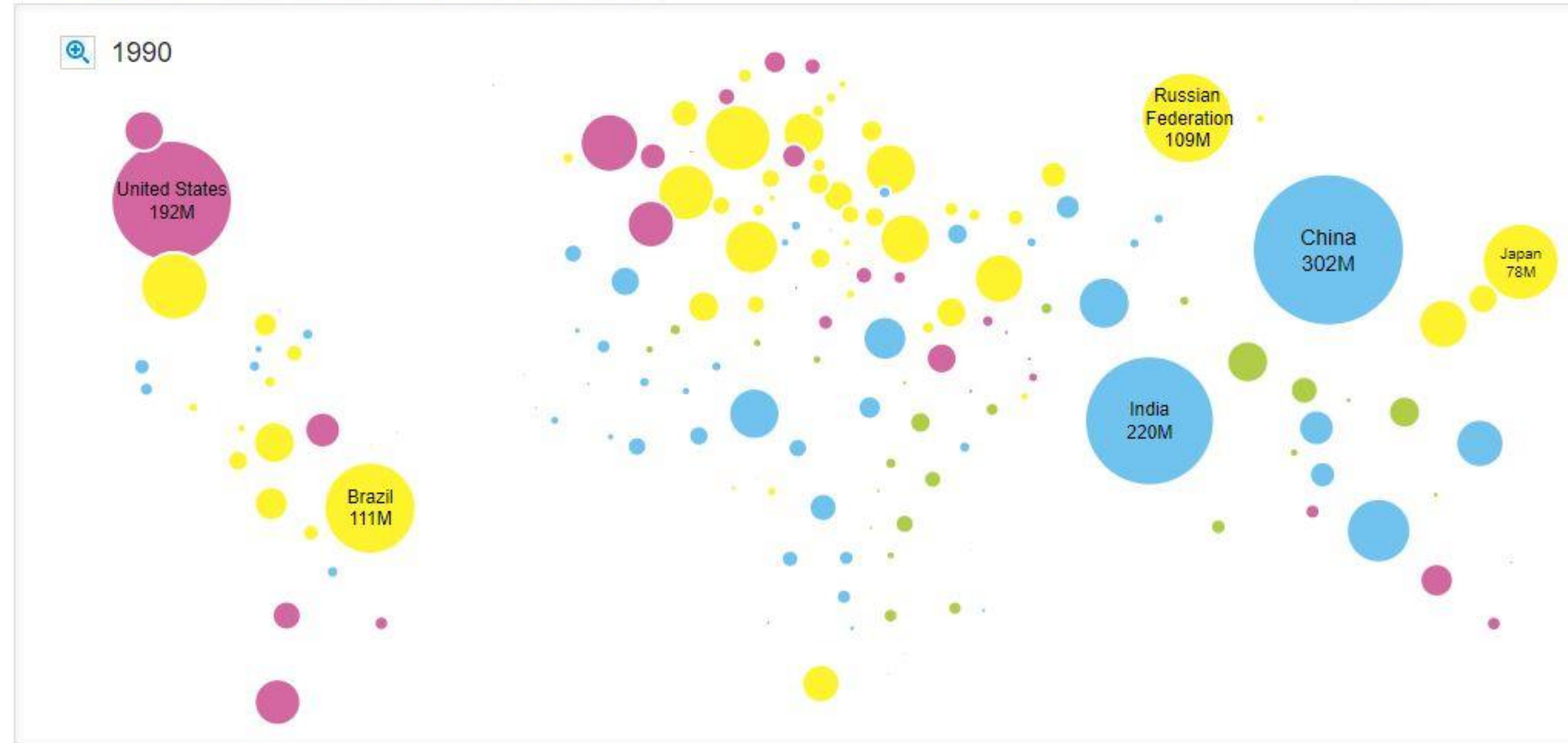
# AN URBAN WORLD

This graphic depicts countries and territories with 2050 urban populations exceeding 100,000. Circles are scaled in proportion to urban population size. Hover over a country to see how urban it is (percentage of people living in cities and towns) and the size of its urban population (in millions).

### Urban Population

- Greater than 75%
- 50% - 75%
- 25% - 50%
- Less than 25%

1990



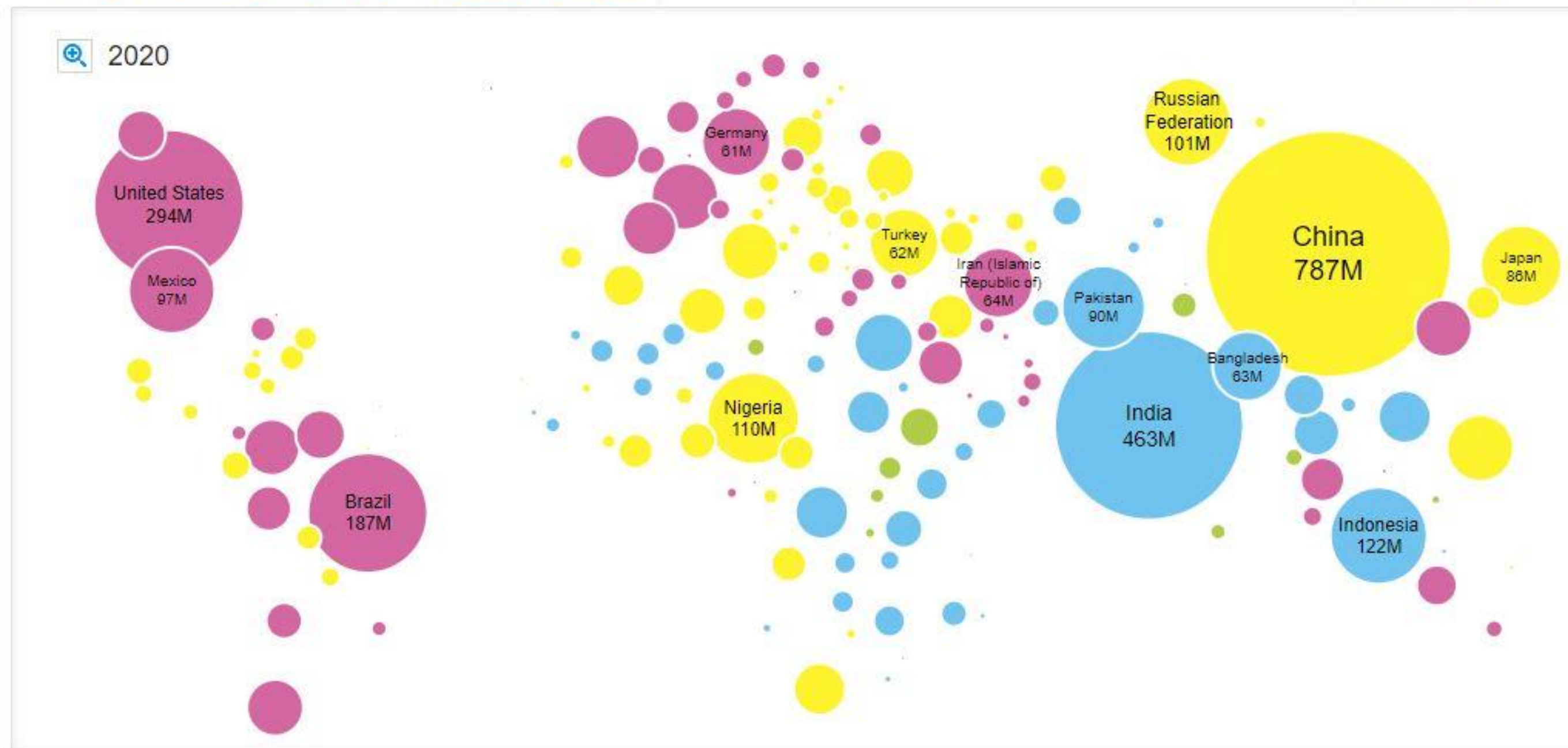


# AN URBAN WORLD

This graphic depicts countries and territories with 2050 urban populations exceeding 100,000. Circles are scaled in proportion to urban population size. Hover over a country to see how urban it is (percentage of people living in cities and towns) and the size of its urban population (in millions).

Urban Population

- Greater than 75%
- 50% - 75%
- 25% - 50%
- Less than 25%





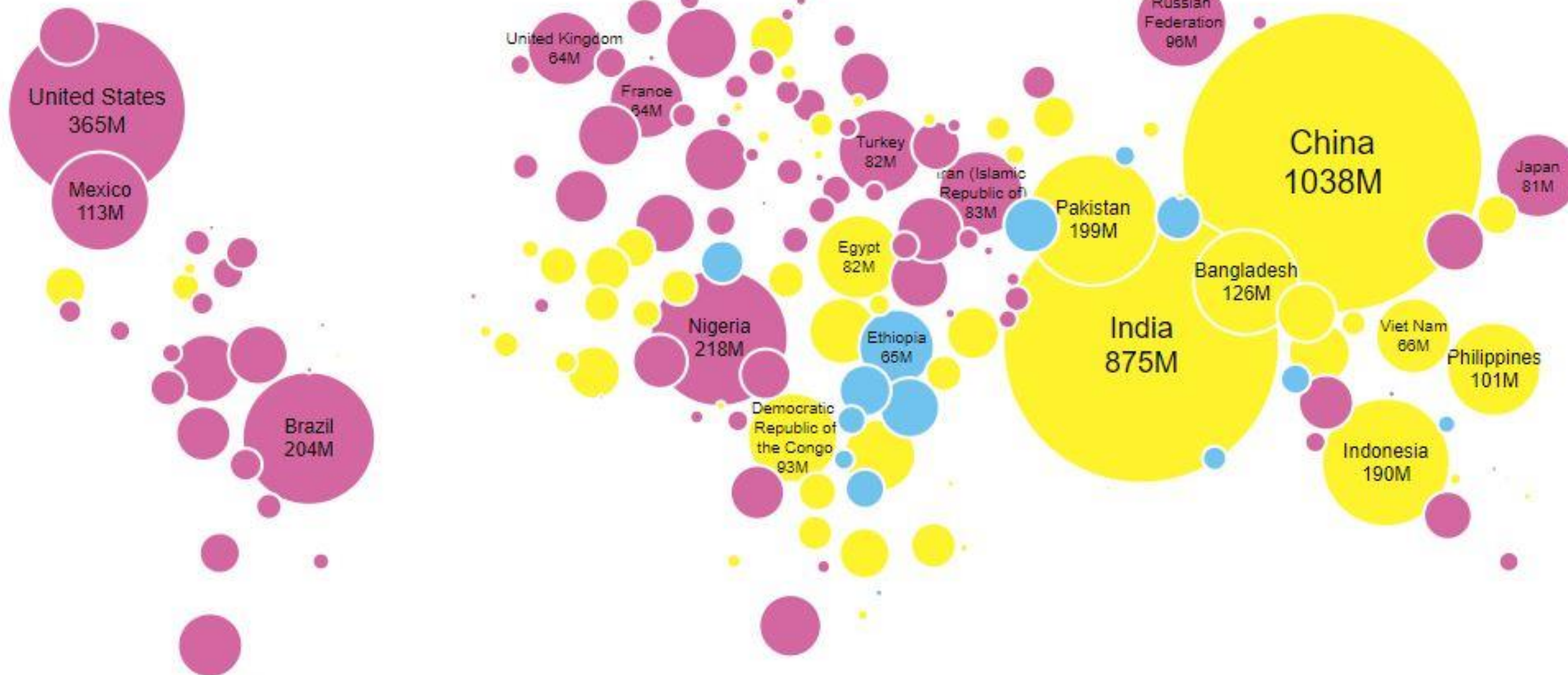
# AN URBAN WORLD

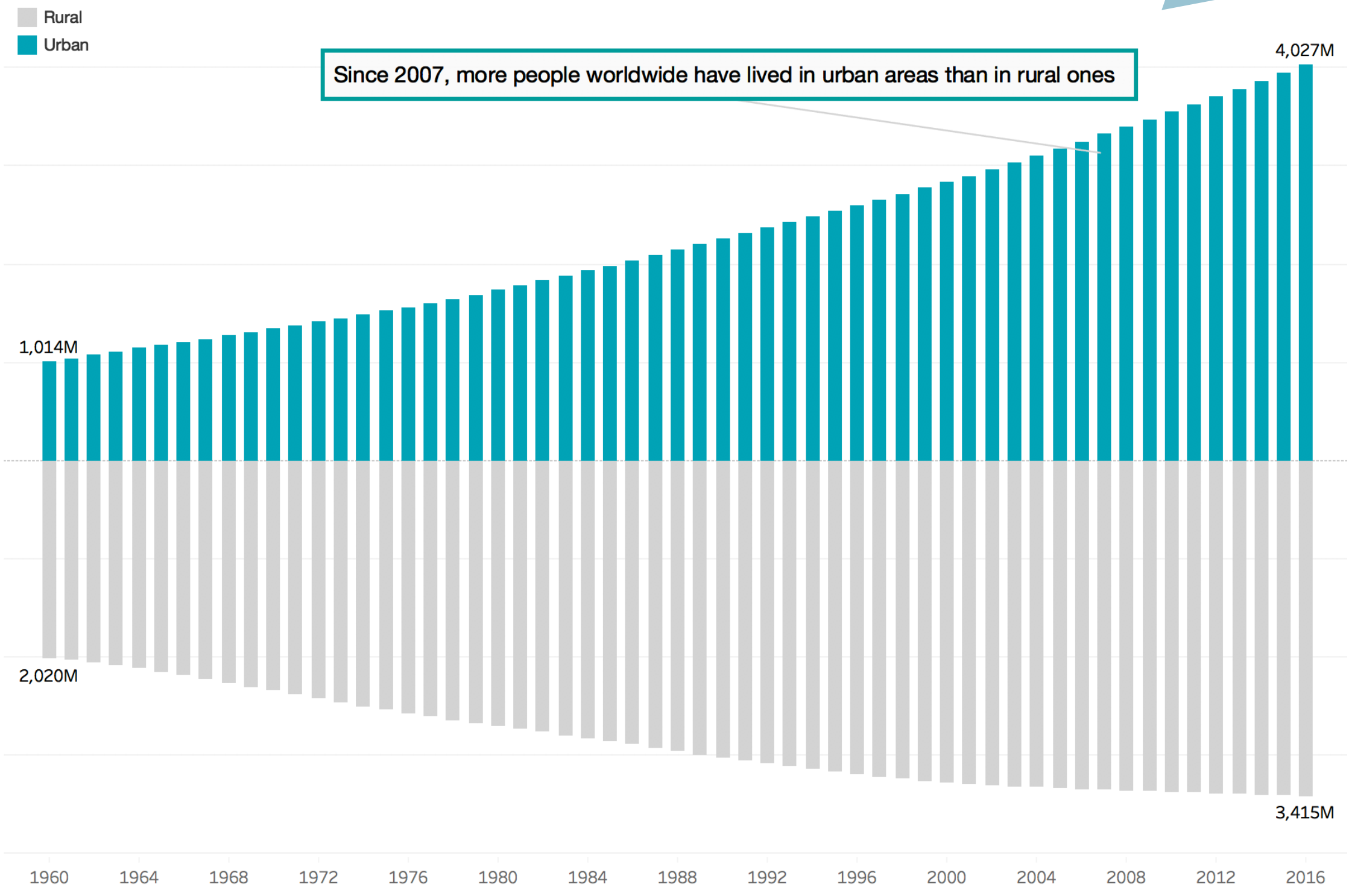
This graphic depicts countries and territories with 2050 urban populations exceeding 100,000. Circles are scaled in proportion to urban population size. Hover over a country to see how urban it is (percentage of people living in cities and towns) and the size of its urban population (in millions).

### Urban Population

- Greater than 75%
- 50% - 75%
- 25% - 50%
- Less than 25%

2050





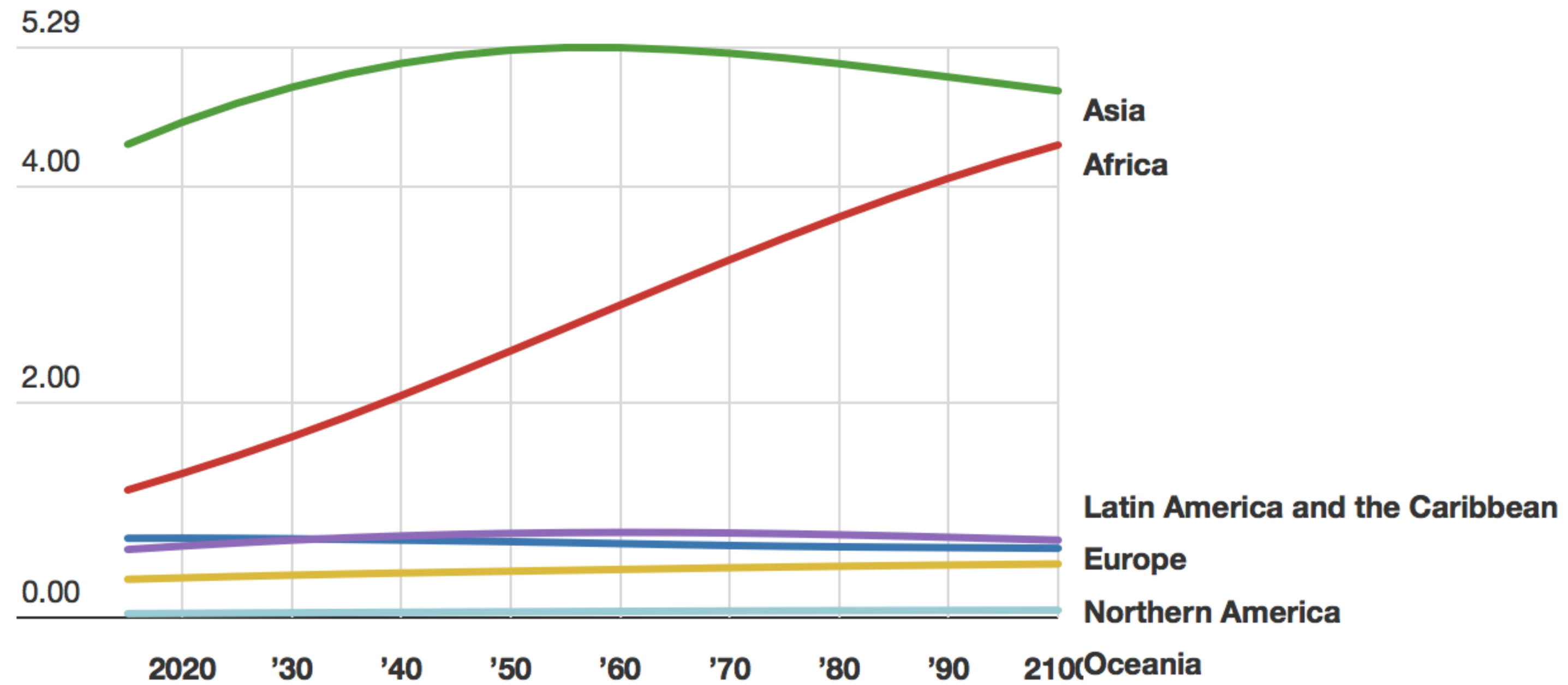
data source: The World Bank | design & analysis: DoC insight @dav1b



# AFRICA & ASIA



## UN Regional Population Projections (Billions, 2015 - 2100)





**IN 40 YEARS WE WILL BUILD AS  
MANY NEW CITIES AS IN ALL  
HUMAN HISTORY**



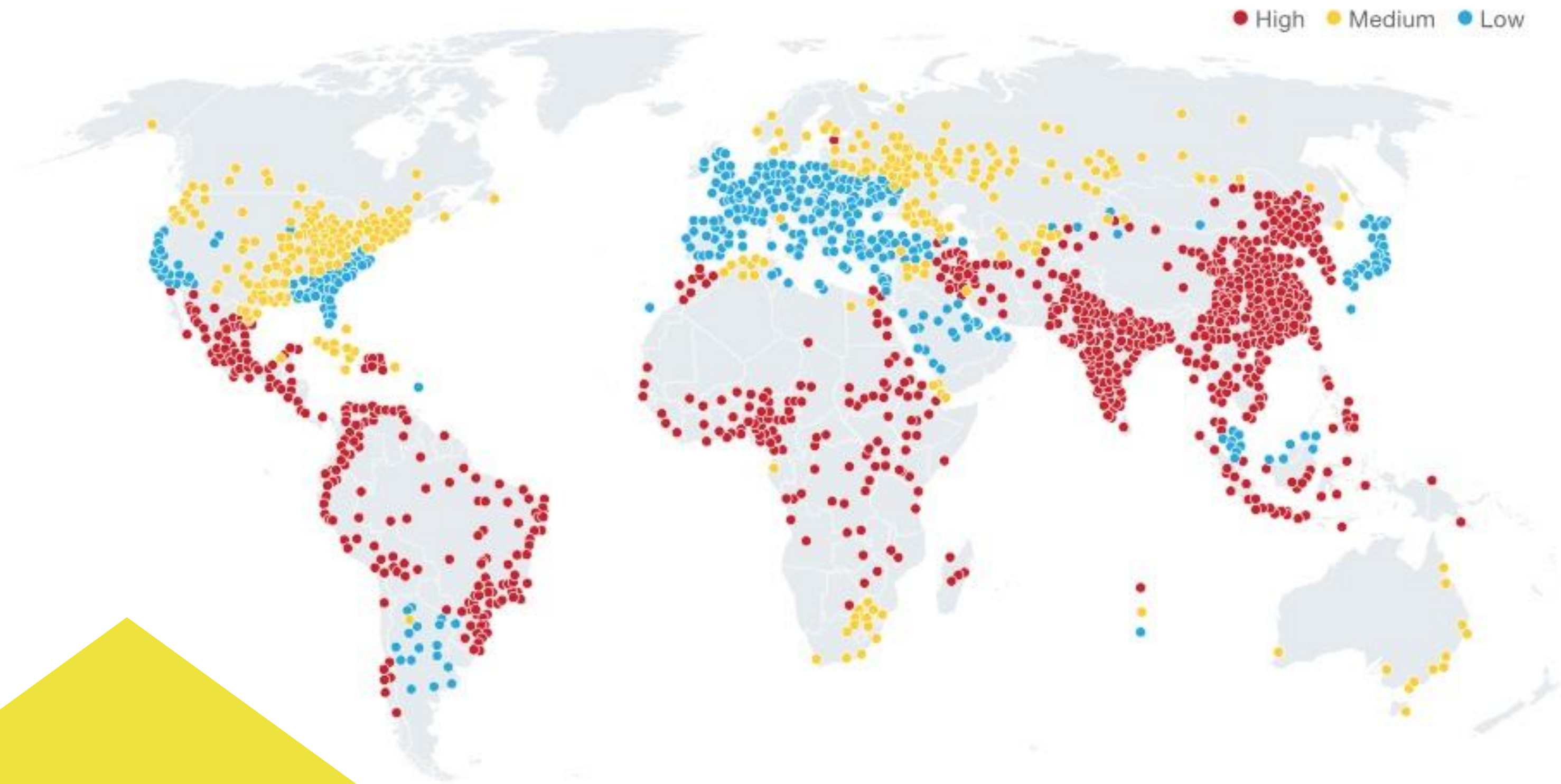
# STRESS ON RESOURCES

# SMARTCITY

EXPO WORLD CONGRESS

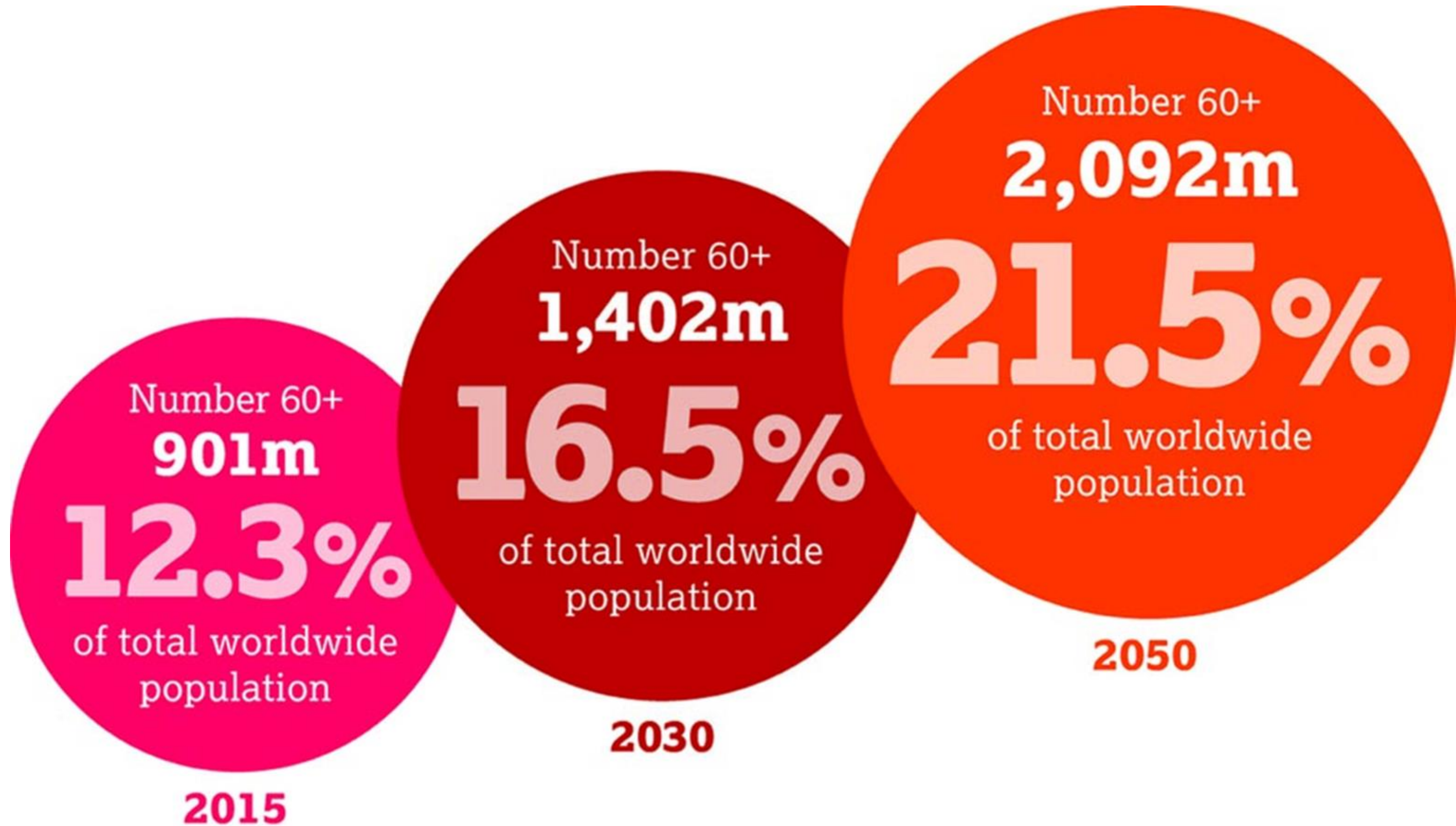


Resource stress level by city





# AGEING POPULATION





**REALITY NUMBER 2.**

**THE ERA OF DIGITAL  
TRANSFORMATION**

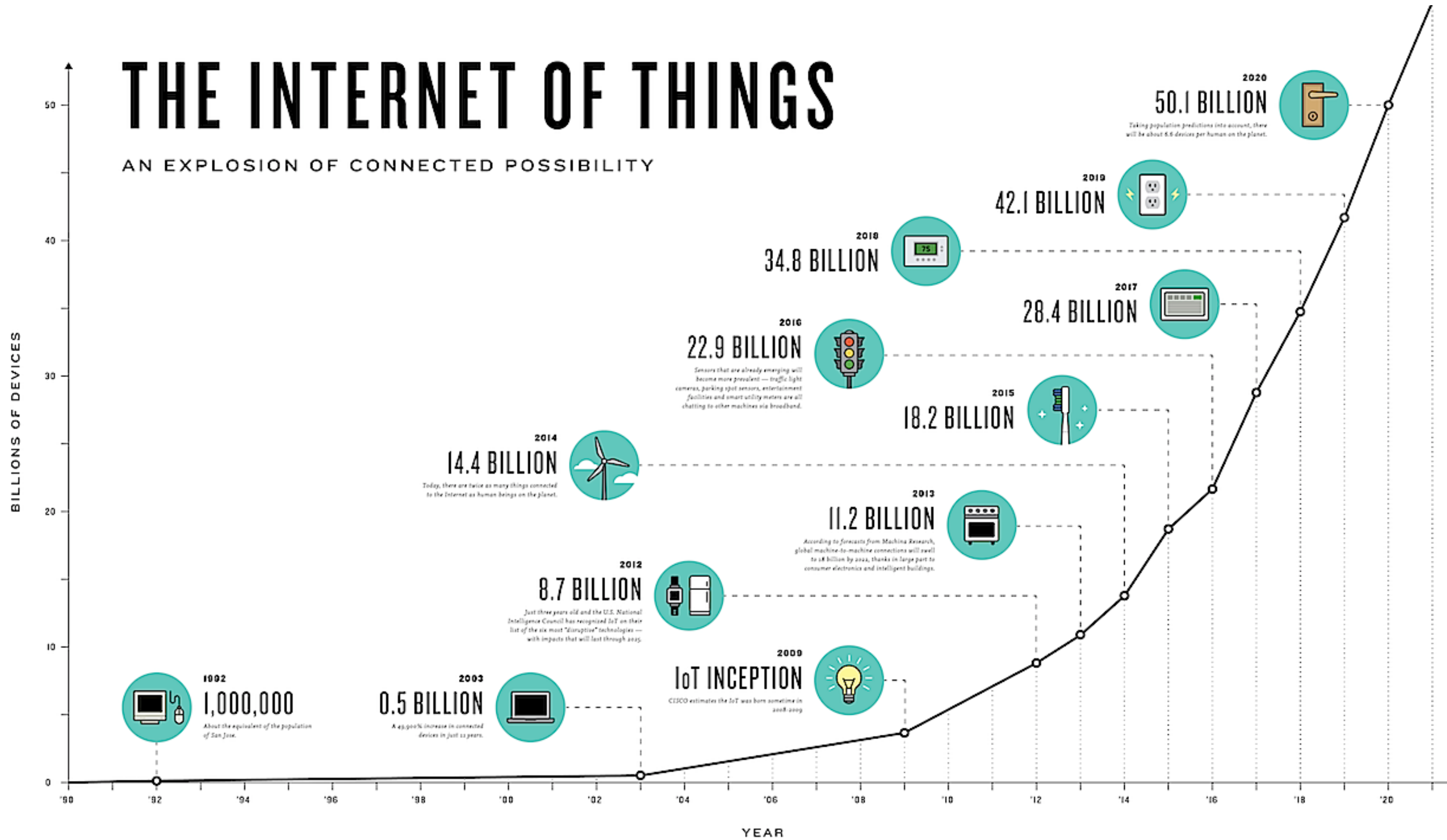






# THE INTERNET OF THINGS

AN EXPLOSION OF CONNECTED POSSIBILITY



**SMARTCITY**  
EXPO WORLD CONGRESS



# **THE NEW ECONOMY OF DATA**

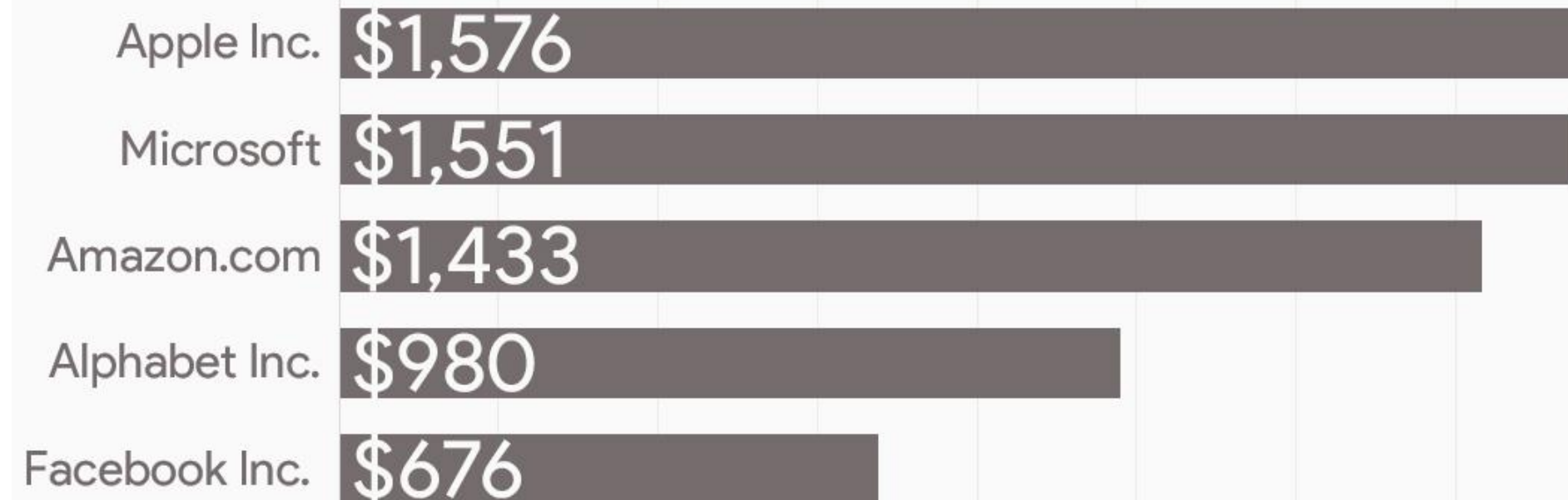


# The five largest companies

in 2010



vs 2020





“

Data is the new oil”

Clive Humby





# **THE CENTURY OF CITIES & THE ERA OF DIGITAL TRANSFORMATION**

SMARTCITY  
EXPO WORLD CONGRESS



**IT'S A NEW WORLD**



**SMART  
CITY**





**10 YEARS AGO**





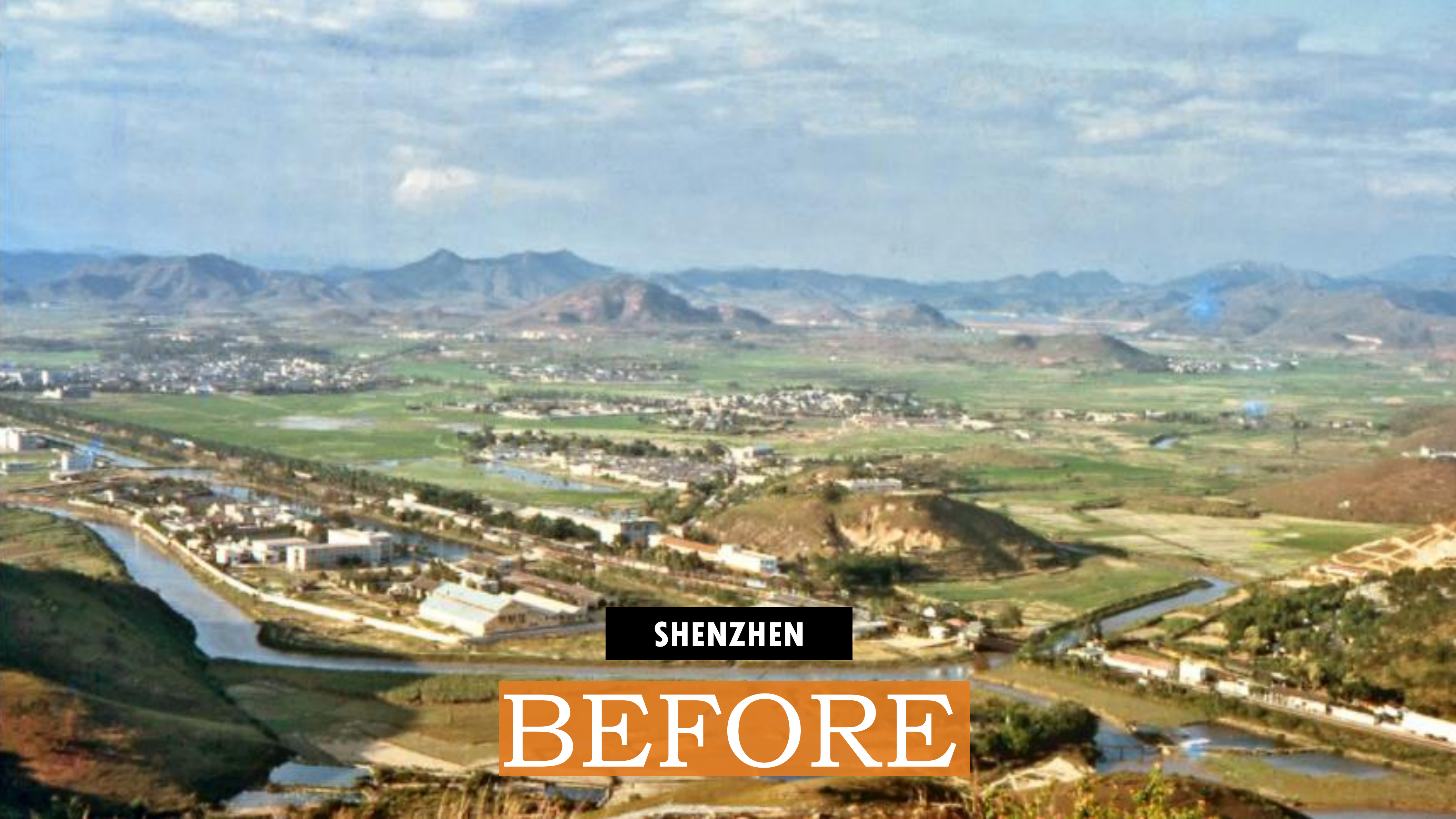
SMARTCITY  
EXPO WORLD CONGRESS



**TODAY**







**SHENZHEN**

**BEFORE**



**SHENZHEN**

**AFTER**



**NEW YORK**

**BEFORE**



**NEW YORK**

**TODAY**



# WRAP UP



Wrap-up: what have we learnt these past 10 years?

- Shifts in demographics = strains on cities' resources and infrastructure + competition for talent & ageing society.
- Talent + technology + climate change: key shapers of the future city.





- The perfect city doesn't exist: every city will have to design its own future journey.
- Put the citizen at the center, and create smart cities to have a better life: Smart City Expo World Congress shows that it is possible to build 'Cities to Live In'.



THANK YOU!

