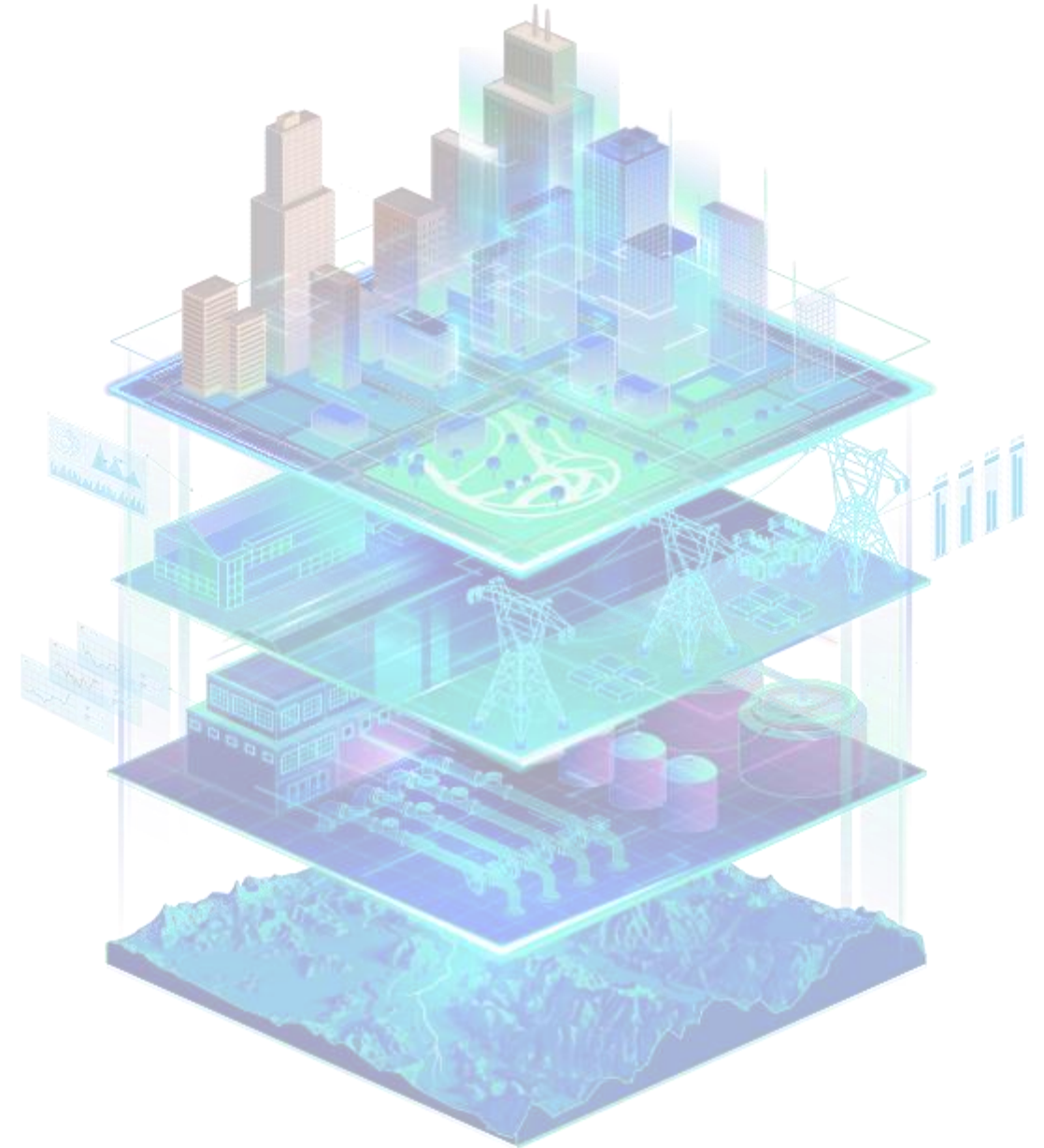


Co-creating a Local Digital Twin Toolbox: key components and requirements.

Project presentation and light
focus group

14 June 2023, Brussels



WELCOME & INTRODUCTION
FACILITATORS TEAM



**Massimo
Pellegrino**
Partner



**Christian
Pasquale Aprile**
Senior Manager



**Eliana
Gerardi**
Senior
Associate



To engage in a collaborative way and to collect your needs and requirements that will guide the co-designing process of a toolbox, encompassing both components and requirements for the development of Local Digital Twins.

- 5' Welcome & Introduction**
- 5' Project Approach**
- 45' Sharing Knowledge and needs**
- 5' Next steps**

Let's define Local Digital Twins

This definition is not static and shall encompass future technological and structural changes.

Local Digital Twins are a virtual representation of physical assets and processes within a geographically located community, which reflect and derive from cross-sectorial, historical and (near) real-time data.

Their purpose is to enhance evidence-based decision-making, at the operational, strategic and tactical levels, to better meet the needs of communities.

Local Digital Twins combine multiple technologies, such as **data analytics** and artificial intelligence, enabling **predictive and simulation models** that can be updated and changed as their physical equivalents change.

Let's introduce the Project Goal

Our goal is to identify the needs that a LDT Toolbox should meet, outline **key components** of the Toolbox and identify **legal, functional and technical requirements**.

PROJECT APPROACH STAGES

01.

Understanding and mapping LDT stakeholders

In progress

- Create a detailed mapping of all relevant European technology providers and users of the LDT ecosystem.
- Support and propose measures to enable their integration into an EU LDT community.

02.

Identify LDT toolbox needs

Today's Focus

- Identify technical, functional, legal and security needs for the LDT toolbox.
- Engage in a collaborative process with the stakeholder groups to co-design and co-create the toolbox.

03.

Scenario building for an EU LDT toolbox

July 2023

- Prepare and compare different paths towards the implementation of the toolbox.
- Present the most fit-for-purpose scenario.

04.

Defining the path towards a LDT toolbox

To be concluded by end of August 2023

- Presentation of the functional and technical design of the LDT toolbox.
- Preparation of a plan for the deployment and scale-up of AI-powered Digital Twins.

Let's give our take on the Local Digital Twins Toolbox

The Toolbox will include **guidelines** (best practices, lessons learned, standards, etc.), **building blocks, re-usable tools** to allow cities and communities to **build Local Digital Twins** following a **consistent and coherent approach** across the EU.

- ⚡ Identify **best practices, lessons learned** and **pain points** for key stakeholders
- ⚡ Explore the **purposes that a LTD toolbox should serve**
- ⚡ **Create a common understanding** on which components the toolbox should include
- ⚡ **Gain insights to inform the next stage** of the project

Share your views

Via Slido: you will be asked to give your opinion and share experiences and needs

Today

Participate in discussions

About yours and the rest of the audience's views to enrich findings

Today

Keep in touch

Contact us via email should you wish to continue shaping together the LDT toolbox

Jun - Aug 2023

Catch opportunities

At the end of the session, we will signpost further engagement opportunities

July 2023



HOW TO PARTICIPATE

1. Join via the QR code or link and input your details
2. Insert your email address
3. Switch from the Q&A to the “Polls” tab
4. Use the “Q&A” tab to share your feedback on the question provided



Join at
slido.com
#1188 381

Next steps



NEXT STEPS

What

Targeted Interviews
From mid-June to
beginning of July

Co-design Workshop
Mid-July to be planned

How

Face-to-Face or online

Face-to-Face or online

Why

Dig deeper into technical and functional requirements of Local Digital Twins.

Co-create potential solutions in terms of a Local Digital Twin Toolbox.

CALL TO ACTION!

Participate in the co-design of the Local Digital Twins (LDT)
toolbox technical specifications for advancing the
transformation of Smart Communities

ARE YOU A SMART CITY OR
COMMUNITY?



<https://ec.europa.eu/eusurvey/runner/SmartcitiesLDTsurvey>

ARE YOU A TECHNOLOGY
PROVIDER?



<https://ec.europa.eu/eusurvey/runner/LDT-Survey>

ARE YOU A
STANDARDISATION BODY?



<https://ec.europa.eu/eusurvey/runner/StandardisationBodyLDTsurvey>

THANK YOU!



eliana.gerardi@intelleraconsulting.com



massimo.pellegrino@intelleraconsulting.com



christian.pasquale.aprile@intelleraconsulting.com